

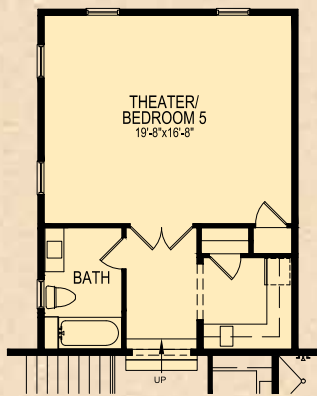


# GOLDEN OAK

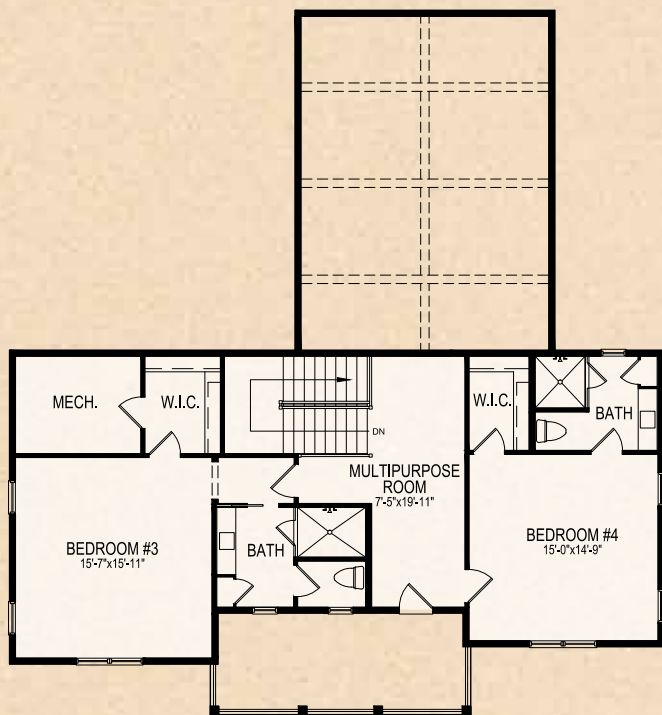
At *Walt Disney World* Resort



## SEVILLE



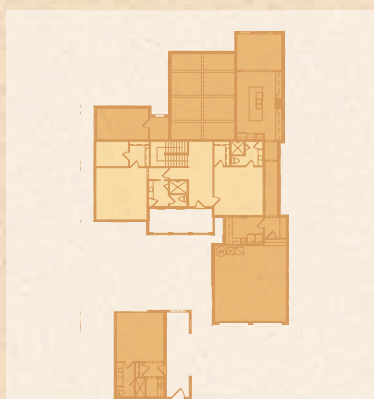
SECOND FLOOR OPTION



SECOND FLOOR



FIRST FLOOR

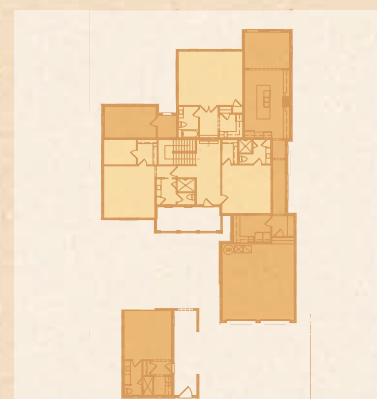


SECOND FLOOR LOCATION

First Floor A/C Living	2,738
Second Floor A/C Living	1,104
Guest Suite	437
<b>Total A/C Living</b>	<b>4,279 Sq. Ft.</b>

2 Car Garage	577
Outdoor Living	426
<b>Total Square Feet</b>	<b>5,282 Sq. Ft.</b>

Second Floor  
Bedroom #5/Theater Option +556 Sq. Ft.



SECOND FLOOR  
OPTION LOCATION

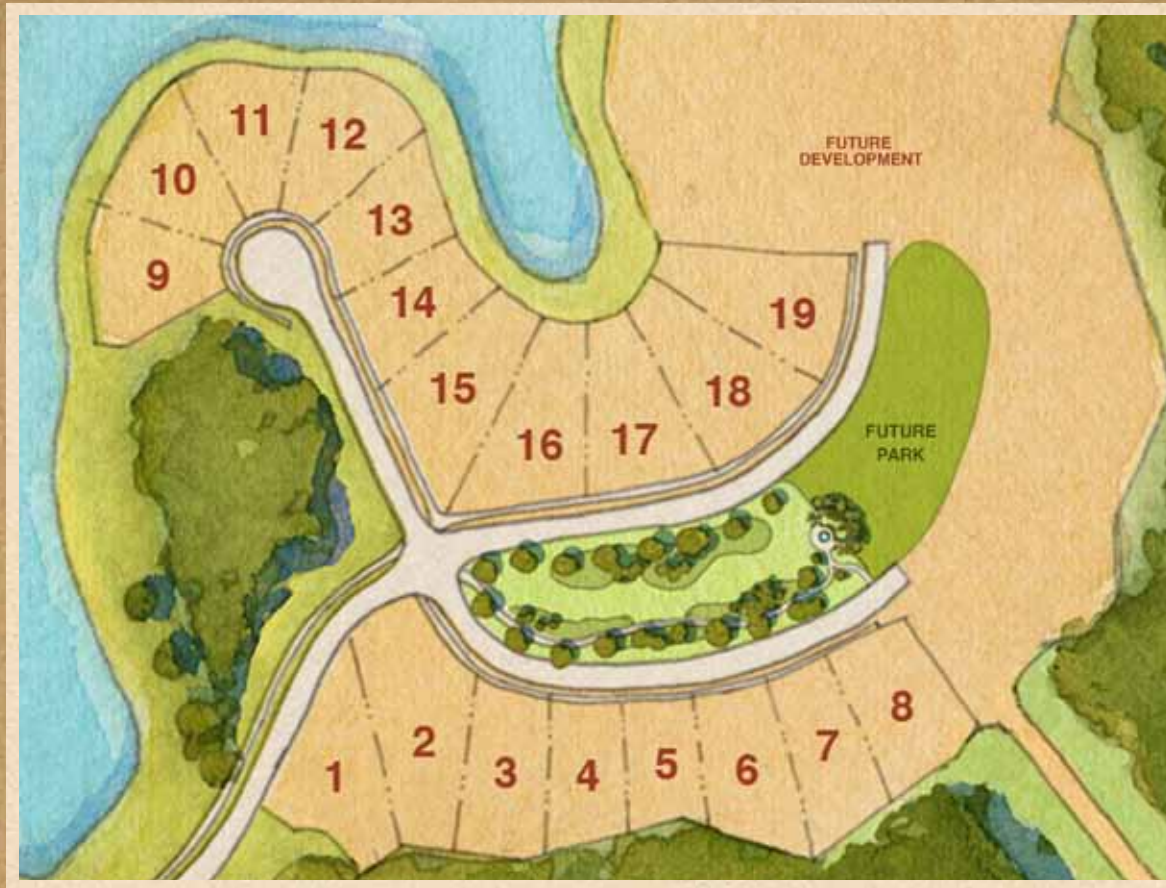
# SEVILLE

Designed to fit Marceline Lot 3\*

ISSA Homes

\*Plan may fit other homesites with minor or major modifications which must be approved by the Architectural Control Board.





【 GOLDEN OAK REALTY 】

10501 DREAM TREE BOULEVARD ■ GOLDEN OAK, FLORIDA 32836

407.939.5577 (MAIN) ■ 407.938.9999 (FAX)

DISNEYGOLDENOAK.COM



Illustrations are artist depictions only and may differ from completed improvements. Artist rendering may not reflect the actual details or landscaping of the finished home. Builder reserves the right to make changes to these plans, specifications, dimensions, and elevations without prior notice. Plans are presented as Concept plans only and will require additional design reviews as required by the Architectural Control Board (ACB). All plans must receive final approval by the ACB before being built. Dimensions are subject to change without notice. See a sales associate for complete and current information. Printed 4/2013.