



# GOLDEN OAK

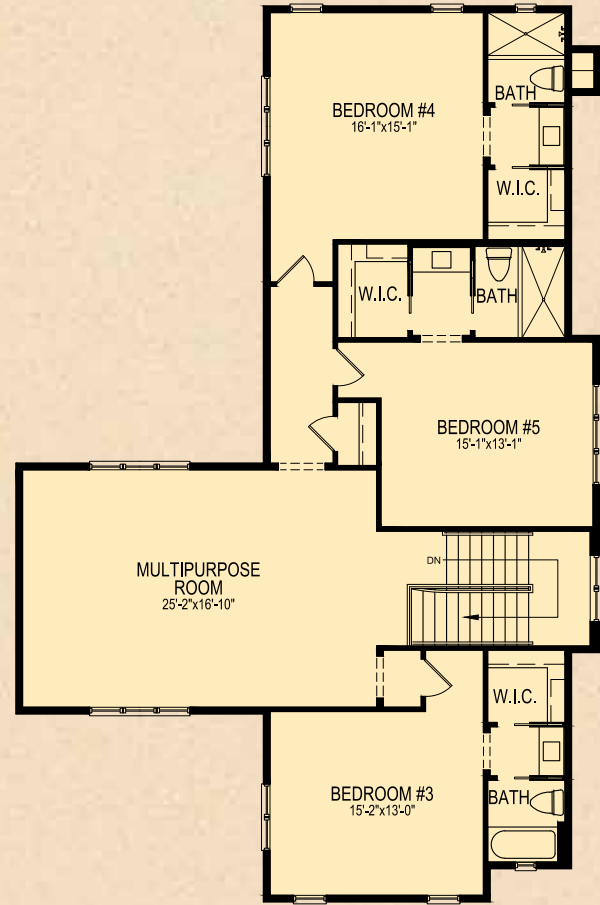
At WALT DISNEY World Resort



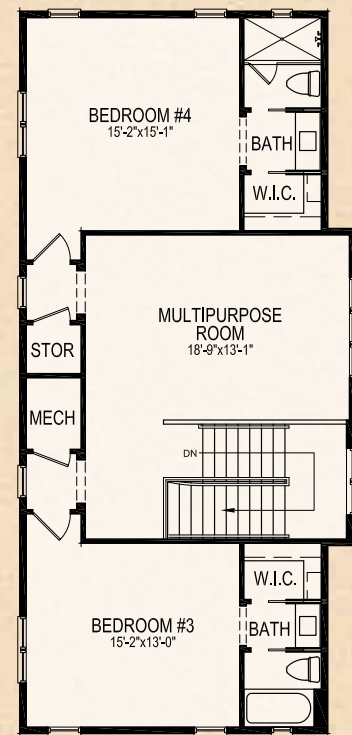
JOLI



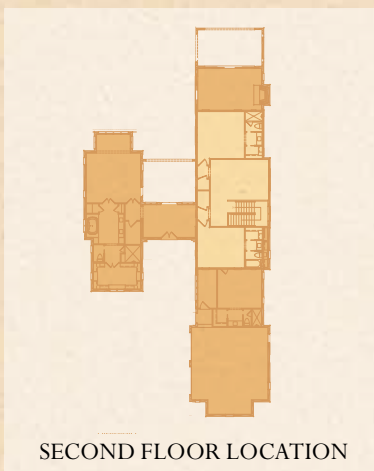
FIRST FLOOR



SECOND FLOOR OPTION



SECOND FLOOR

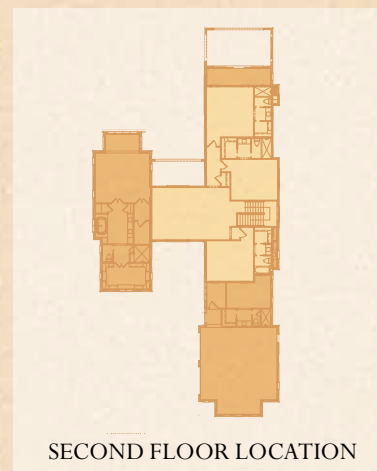


SECOND FLOOR LOCATION

First Floor A/C Living	2,996
Second Floor A/C Living	1,074
<b>Total A/C Living</b>	<b>4,070 Sq. Ft.</b>

2 Car Garage	730
Outdoor Living	524
<b>Total Square Feet</b>	<b>5,324 Sq. Ft.</b>

Second Floor  
 Bedroom #5 and  
 Multipurpose Room Option +568 Sq. Ft.



SECOND FLOOR LOCATION

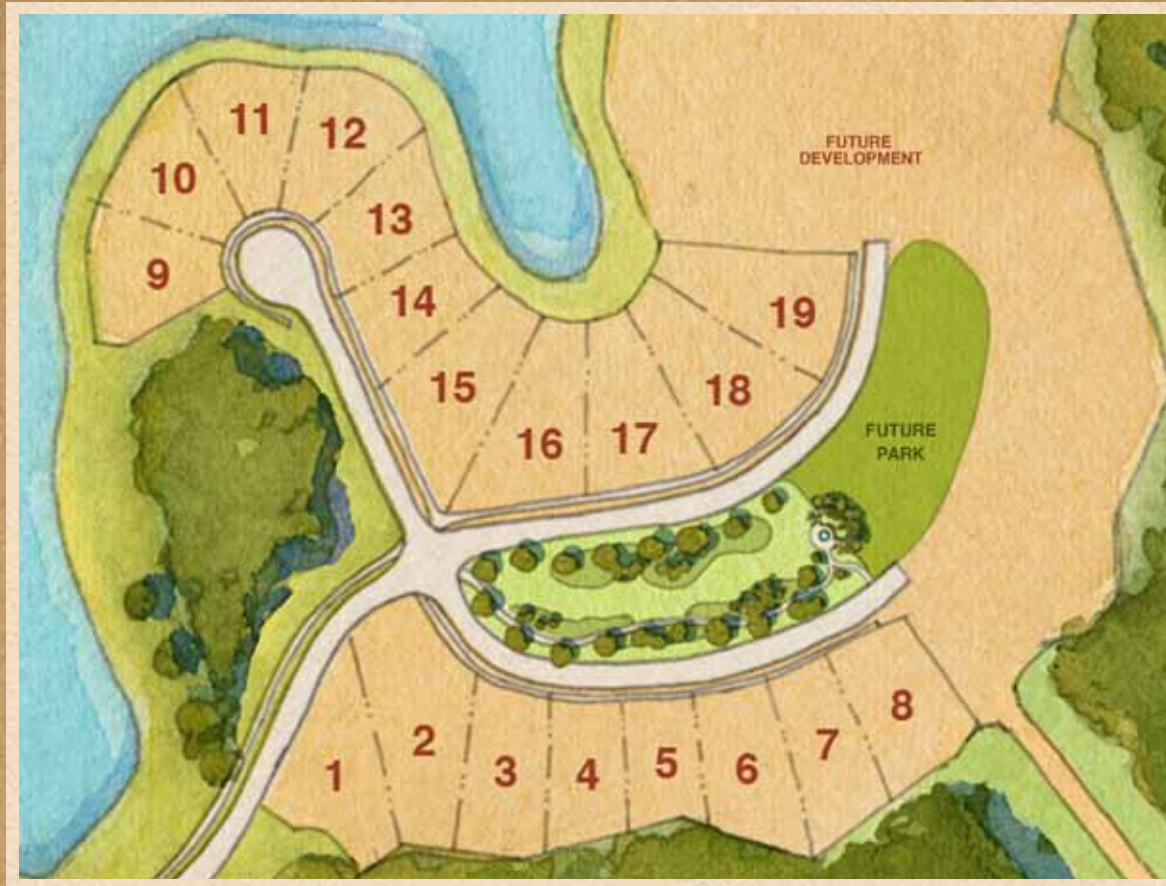
# JOLI

Designed to fit Marceline Lot 3\*

## CAHILL

*\*Plan may fit other homesites with minor or major modifications which must be approved by the Architectural Control Board.*





**GOLDEN OAK REALTY**

**10501 DREAM TREE BOULEVARD ■ GOLDEN OAK, FLORIDA 32836**

**407.939.5577 (MAIN) ■ 407.938.9999 (FAX)**

**DISNEYGOLDENOAK.COM**



**CAHILL**

Illustrations are artist depictions only and may differ from completed improvements. Artist rendering may not reflect the actual details or landscaping of the finished home. Builder reserves the right to make changes to these plans, specifications, dimensions, and elevations without prior notice. Plans are presented as Concept plans only and will require additional design reviews as required by the Architectural Control Board (ACB). All plans must receive final approval by the ACB before being built. Dimensions are subject to change without notice. See a sales associate for complete and current information. Printed 4/2013.